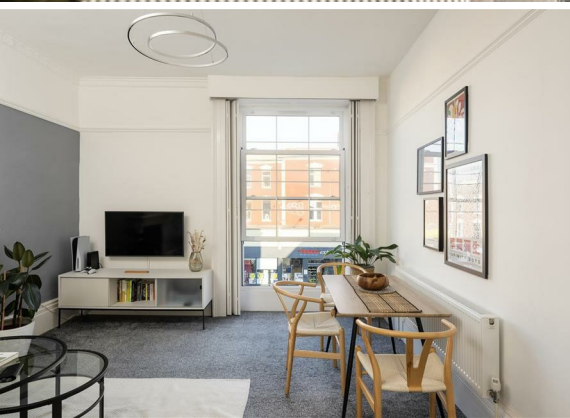




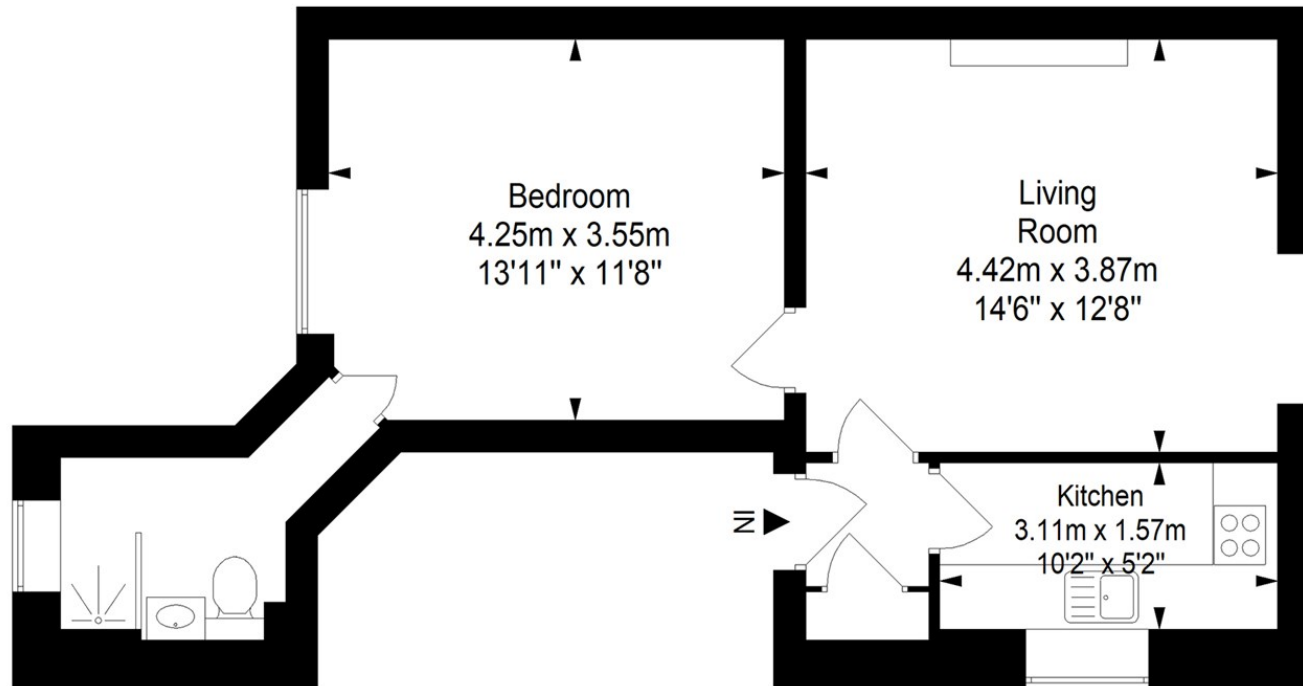
**1 Bed
Flat
located in**

£1,400 PCM



Cheltenham Road, Bristol, BS6 5RR

Approximate Gross Internal Area = 44.9 sq m/ 483.3 sq ft



This floor plan has been drawn using RICS guidelines (GIA)

Disclaimer : Please note this floor plan is for marketing purposes and is to be used as guide only.
All Efforts have been made to ensure its accuracy at time of print

DIRECTIONS

CONTACT

Second Floor 9 Queen Square
Bristol
BS1 1JE

E: hello@acenproperties.co.uk
T: 01173634411
9 Queen Square

Energy Efficiency Rating		
	Current	Potential
Very energy efficient - lower running costs		
(92 plus) A		
(81-91) B		
(69-80) C		
(55-68) D		
(39-54) E		
(21-38) F		
(1-20) G		
Not energy efficient - higher running costs		
England & Wales		
EU Directive 2002/91/EC		

